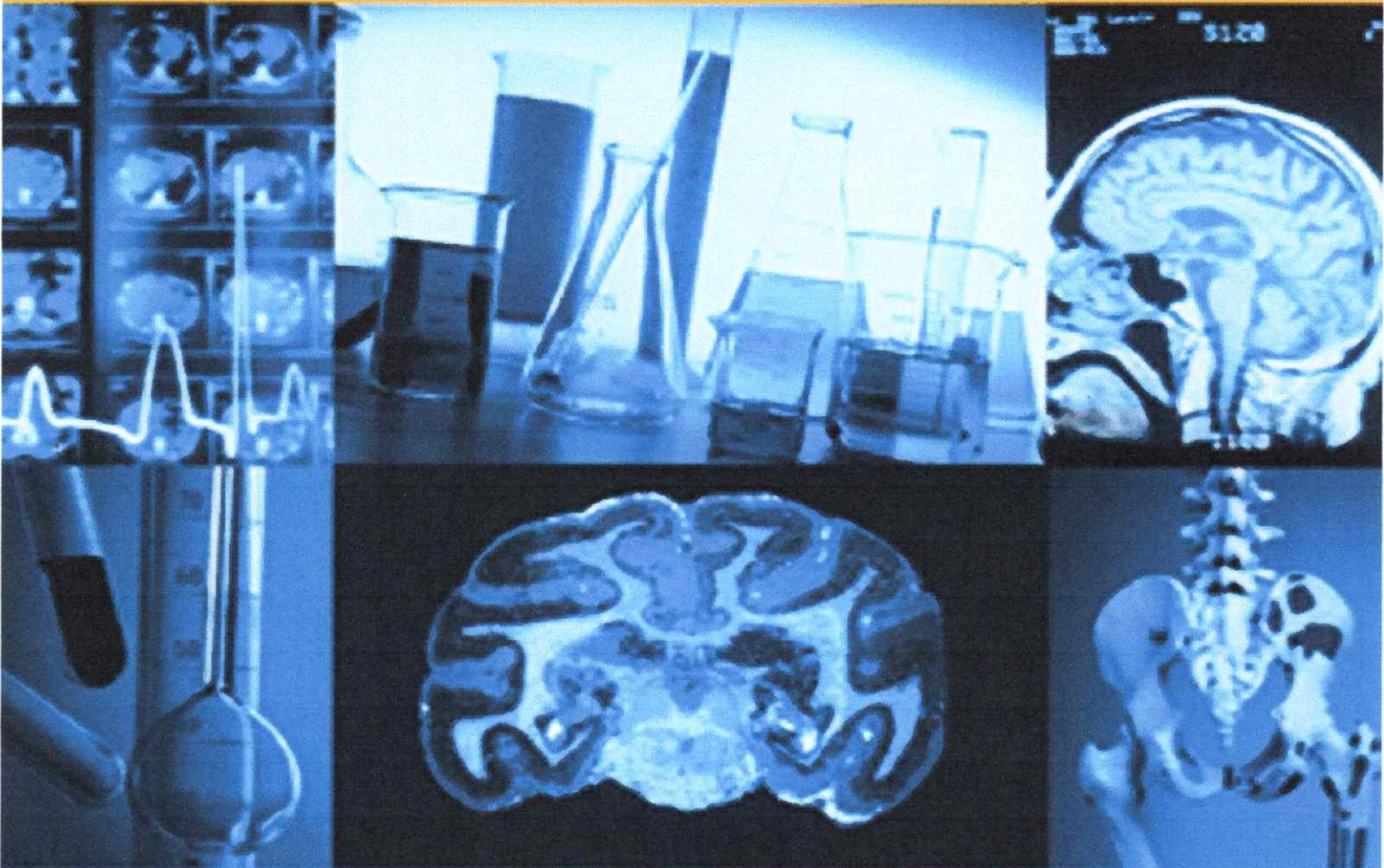


ISSN 2252-8806

Vol. 8, No. 2, June 2019

International Journal of  
**Public Health Science**

**IJPHS**





Home > [About the Journal](#) > [Editorial Team](#)

## Editorial Team

### Advisory Board

[Prof. Hans-Olov Adami](#), Harvard School of Public Health, United States  
[Assoc. Prof. Dr. Luoping Zhang](#), University of California, Berkeley, United States  
[Dr. Khalid M. Al Aboud](#), King Faisal Specialist Hospital and Research Centre, Saudi Arabia

### Editor-in-Chief

[Prof. Dr. Jay G. Silverman](#), University of California, San Diego School of Medicine, United States

### Managing Editor

[Dr. Lina Handayani](#), Universitas Ahmad Dahlan, Indonesia

### Associate Editors

[Assoc. Prof. Dr. Rob Martinus Van Dam](#), National University of Singapore, Singapore  
[Assoc. Prof. Dr. Mohd Hasni Jaafar](#), Universiti Kebangsaan Malaysia, Malaysia  
[Assoc. Prof. Dr. Henry Odhianoson Imhonde](#), Ambrose Alli University, Nigeria  
[Prof. Dr. Mane Abhay Babruwahan](#), Smt. Kashibai Navale Medical College, India  
[Dr. Fazal Shirazi](#), MD Anderson Cancer Center, United States  
[Dr. Miguel A. Mayer MD, PhD, MPH, MSc, Dipl.](#), Universitat Pompeu Fabra, Spain  
[Dr. Muhiuddin Haider](#), University of Maryland, United States  
[Dr. Tassanee Rawiworrakul](#), Mahidol University, Thailand  
[Dr. Xiaoli Gao](#), University of Texas Health Science Center at San Antonio, United States  
[Dr. Yuming Guo](#), Monash University, Australia

### Editorial Board Members

[Prof. Dr. George Williams Rutherford](#), Global Health Sciences, University of California, San Francisco, United States  
[Prof. Dr. Jens Aagaard-Hansen](#), Danish Bilharziasis Laboratory, Denmark  
[Prof. Dr. Louise H. Taylor](#), Global Alliance for Rabies Control, Manhattan, United States  
[Prof. Dr. Mogens Vyberg](#), Aalborg Universitet, Denmark  
[Dr. Abhinand Thairavalappil](#), Ryerson University, Canada  
[Dr. Stephanie S. Rothenberg](#), University of Pittsburgh Medical Center, United States  
[Dr. Aletha Yvette S. Akers](#), Magee-Womens Hospital, Pittsburgh, United States  
[Dr. Andrew Winokur](#), University of Connecticut School of Medicine, United States  
[Dr. Barbara Abrams](#), University of California, United States  
[Dr. Barbara K. Campbell](#), University of California, San Francisco, United States  
[Dr. Christopher Bowie](#), University of Canterbury, New Zealand  
[Dr. Erika Villavicencio-Ayub](#), Universidad Nacional Autónoma de México, Mexico  
[Dr. Fhumulani Mavis Mulaudzi](#), University of Pretoria, South Africa  
[Dr. Jennifer A. Fish](#), The University of South Australia, Australia  
[Dr. Li-Ping Zou](#), Department of Paediatrics, Chinese PLA General Hospital, China  
[Dr. Phayong Thepakorn](#), Sirindhorn College of Public Health, Thailand  
[Dr. Rob M.G. van Bommel](#), Catharina Hospital, Netherlands  
[Dr. Tarik Bereket](#), University of Toronto, Canada  
[Dr. Vera Fernandes](#), Hospital de Braga, Portugal

**International Journal of Public Health Science (IJPHS)**  
 p-ISSN: 2252-8806, e-ISSN: 2620-4126



[View IJPHS Stats](#)



This work is licensed under a [Creative Commons Attribution-NonCommercial 4.0 International License](#).

#### CITATION ANALYSIS

- Scopus
- Google Scholar
- Scholar Metrics
- Scinapse
- Dimensions

#### SPECIAL LINKS

- Author Guideline
- Editorial Boards
- Online Submissions
- Abstracting and Indexing
- Publication Ethics
- Visitor Statistics
- Contact Us

#### USER

Username   
 Password   
 Remember me  
[Login](#)

#### NOTIFICATIONS

- View
- Subscribe

#### LATEST ISSUES

2020: **Mar, Jun, Sep, Dec**  
 2019: **Mar, Jun, Sep, Dec**  
 2018: **Mar, Jun, Sep, Dec**  
 2017: **Mar, Jun, Sep, Dec**  
 2016: **Mar, Jun, Sep, Dec**  
 2015: **Mar, Jun, Sep, Dec**  
 2014: **Mar, Jun, Sep, Dec**  
 2013: **Mar, Jun, Sep, Dec**  
 2012: **Jul, Dec**

#### JOURNAL CONTENT

Search   
 Search Scope   
 All   
[Search](#)  
 Browse  

- By Issue
- By Author
- By Title

#### FONT SIZE

#### INFORMATION

- For Readers
- For Authors
- For Librarians

**MENGESAHKAN**  
**Salinan/copy sesuai dengan aslinya**  
**Banjarmasin, 8 Juni 2020**  
**Universitas Sari Mulia**  
**Lembaga Penelitian dan Pengabdian**  
**kepada Masyarakat (LPPM)**  
**Ketua**  
**Dini Rahmayani, S.Kep., Ns., MPH**  
**NIK. 1166122004007**

Home > Archives > **Vol 8, No 2**

## Vol 8, No 2

June 2019

DOI: <http://doi.org/10.11591/ijphs.v8i2>

### Table of Contents

<a href="#">Integrating palliative care and hospice services in long term care: an eightfold path health policy analysis</a> Amil Kusain Tan  Total views : 322 times	<a href="#">PDF</a> 143-150
<a href="#">Bio-physicochemical markers of the Aedes aegypti breeding water in endemic and non-endemic area</a> Nurul Hidayah, Dwi Rahmawati  Total views : 548 times	<a href="#">PDF</a> 151-157
<a href="#">Prevalence of hypospadias patients with undescended testis</a> Abrar Arbhiwa Tanguirsyaf Siregar, Shalita Dastamuar, Theodorus Theodorus, Marta Hendry  Total views : 652 times	<a href="#">PDF</a> 158-162
<a href="#">Trend analysis of teenage pregnancy in Nigeria (1961-2013): how effective is the contraceptive use campaign</a> Adeniyi Francis Fagbamigbe, Rotimi F. Afolabi, Oyindamola B. Yusuf  Total views : 318 times	<a href="#">PDF</a> 163-173
<a href="#">Description of complete basic immunization coverage among infant</a> Farid Agushybana, Syamsulhuda BM, Sutopo Patria Jati, Martini Martini, Ayun Sriatni  Total views : 237 times	<a href="#">PDF</a> 174-178
<a href="#">Knowledge and parenting patterns with toddler's growth and development</a> murdiningsih murdiningsih, Nurul Komariah  Total views : 232 times	<a href="#">PDF</a> 179-184
<a href="#">Breastfeeding friendly airport to support healthy tourism</a> Lina Handayani, Arzani Arzani, Mahayu Agustia Jayanti, Rini Puji Astuti, Della Noviyanti, Maya Kusuma Dewi  Total views : 249 times	<a href="#">PDF</a> 185-191
<a href="#">Medical students' interests on rural practices</a> Khairinnisa Maizal Gazali, Rizma Syakurah, Mariatul Fadilah  Total views : 479 times	<a href="#">PDF</a> 192-196
<a href="#">Assessment of the Kempe Family Stress Inventory in self-care post-restrain schizophrenia</a> Ah Yusuf, Muhammad Suhron, Rika Subarniati  Total views : 365 times	<a href="#">PDF</a> 197-201
<a href="#">Pregnant mothers' knowledge, attitude and practice towards preventions of iron deficiency anemia in Harar town, Ethiopia</a> Abdu Oumer Abdu, Arif H. Hussein  Total views : 197 times	<a href="#">PDF</a> 202-210
<a href="#">Determinants of dietary adequacy among school age children in Guraghe Zone, Southern Ethiopia</a> Abdu Oumer Abdu, Berhanu Abebaw Mekonnen  Total views : 247 times	<a href="#">PDF</a> 211-218
<a href="#">Nurses' knowledge towards severe acute malnutrition management protocol and its associated factors</a> Abdu Oumer  Total views : 219 times	<a href="#">PDF</a> 219-228
<a href="#">Determinants of food safety practices among food handlers in selected food establishments</a> Abdu Oumer  Total views : 220 times	<a href="#">PDF</a> 229-237
<a href="#">Black cumin seed oil increase leucocyte and CD4T helper number in sprague-dawley rats induced with dimethylbenzanthracene</a>	<a href="#">PDF</a> 238-245

**CITATION ANALYSIS**

- Scopus
- Google Scholar
- Scholar Metrics
- Scinapse
- Dimensions

**SPECIAL LINKS**

- Author Guideline
- Editorial Boards
- Online Submissions
- Abstracting and Indexing
- Publication Ethics
- Visitor Statistics
- Contact Us

**USER**

Username

Password

Remember me

[Login](#)

**NOTIFICATIONS**

- View
- Subscribe

**LATEST ISSUES**

2020: **Mar, Jun, Sep, Dec**

2019: **Mar, Jun, Sep, Dec**

2018: **Mar, Jun, Sep, Dec**

2017: **Mar, Jun, Sep, Dec**

2016: **Mar, Jun, Sep, Dec**

2015: **Mar, Jun, Sep, Dec**

2014: **Mar, Jun, Sep, Dec**

2013: **Mar, Jun, Sep, Dec**

2012: **Jul, Dec**

**JOURNAL CONTENT**

Search

Search Scope

All

[Search](#)

Browse

- By Issue
- By Author
- By Title

**FONT SIZE****INFORMATION**

- For Readers
- For Authors
- For Librarians

## Bio-physicochemical markers of the *Aedes aegypti* breeding water in endemic and non-endemic area

Nurul Hidayah<sup>1</sup>, Dwi Rahmawati<sup>2</sup>

<sup>1</sup>Department of Health Promotion, Health Faculty, Sari Mulia University, Indonesia

<sup>2</sup>Department of Midwifery, Health Faculty, Sari Mulia University, Indonesia

---

### Article Info

#### Article history:

Received Mar 18, 2019

Revised Apr 10, 2019

Accepted May 16, 2019

---

#### Keywords:

*Aedes aegypti*

Dissolved oxygen

pH

Salinity

Temperature

---

### ABSTRACT

The survival of *Aedes aegypti* larvae is inseparable from the adequacy of food, including organic substances available in the breeding water. It is very dependent on the level of water markers such as temperature, salinity, Dissolved Oxygen, and pH. The study used quantitative observational analytic with a case control study design. Case group was consisted of breeding water in endemic area and control group was in non-endemic area. The sample size was 43 samples for each group, collected by purposive sampling technique. Data were analyzed by Chi-square and Mann-Whitney test. Larvae mostly presence in endemic area (68.3%) and mostly absent in non-endemic area (85.4%) ( $p$ -value=0.002). Temperature in endemic area mostly in 27-30°C (86%) and non-endemic area mostly in <27°C or >30°C (72.1%) ( $p$ -value=0.000). Salinity in endemic and non-endemic areas has no difference ( $p$ -value=0.266). DO in endemic areas were mostly in 5.02-7.82 mg/l (76.7%). While DO in non-endemic area was mostly in <5.02 mg/l or >7.82 mg/l (95.3%) ( $p$ -value=0.001). The pH<6 or >7.8 is mostly in non-endemic areas (87.8%) and pH 6-7.8 is mostly in endemic areas (63.4%) ( $p$ -value=0.000). Bio-physicochemical markers of breeding sites water have differences between endemic and non-endemic area except salinity. The temperature, salinity, DO, and pH affected the presence of larvae and the most affected is DO marker. While the marker that affected the presence of larvae in non-endemic area is pH.

Copyright © 2019 Institute of Advanced Engineering and Science.  
All rights reserved.

---

### Corresponding Author:

Nurul Hidayah,

Department of Health Promotion, Health Faculty,

Sari Mulia University,

Jl. Pramuka No. 2, Kelurahan Pemurus Luar, Kota Banjarmasin 70436.

Email: hiragi\_12@yahoo.com

---

## 1. INTRODUCTION

Dengue Hemorrhagic Fever (DHF) is a potentially fatal disease that is transmitted through the *Aedes* mosquito vector carrying the dengue virus. The World Health Organization (WHO) data shows that Indonesia has the highest incidence of DHF among Southeast Asian countries [1-2]. The incidence of this serious disease in Indonesia is known to fluctuate. The incidence of DHF was 77.96 per 100,000 population in 2016 and 22.55 per 100,000 populations in 2017, while the DHF mortality rate was 0.79 in 2016 and 0.75 in 2017. South Kalimantan province experiences some incidence of DHF every year, with especially serious outbreaks in several outbreak areas. In 2015 and 2016, all regencies and cities in the province experienced some incidence of DHF (100%), but this decreased slightly to 92.31% in 2017. One district that has consistently experienced DHF over the last 3 years is Banjar Regency [3-4]. Banjar Regency consists of 19 districts. Martapura District is an endemic area with the highest dengue incidence rate of 98.0 per 100,000 population in 2016 and 71.7 per 100,000 population in 2017 [5-6].



Data shows that DHF is an urgent problem that requires the implementation of control measures so that the incidence of infection does not increase. One approach involves breaking the chain of transmission by controlling the prevalence of the vector *A. aegypti*. It is known that the pre-mature breeding places for *A. aegypti* (larvae) are located in water reservoirs. Damanik's research [7] identified the highest average number of larvae (68.89) as occurring in well water. This shows that the most favored *A. aegypti* mosquito breeding location is in well water. The survival of *A. aegypti* larvae is highly dependent on the availability of nutrients, including organic substances available in breeding water. Thus, its survival is extremely dependent on breeding water quality [7].

Water quality, as measured through observation of various chemical and physical markers, is one of the important factors determining the survival of living organisms in water. One of the physical markers that play an important role in the development of the DHF vector is temperature [8]. Damanik's study [7] found that the optimal water temperature of a breeding site was 27.6°C; at this temperature, the average abundance of *A. aegypti* larvae was found to be the highest. This finding was confirmed by Afolabi, et al. [9], who found that water temperatures at *A. aegypti* breeding sites typically fell within the range of 26.5°C-29.3°C.

In addition to physical markers, several water chemistry markers have also been shown to influence the development of *A. aegypti* larvae. These include salinity and Dissolved Oxygen (DO), which have been proven to have a significant relationship with the development of *A. aegypti* larvae. Based on the results of Rao's research [10] on the characteristics of breeding sites, salinity has a significant correlation with the presence of *A. aegypti* larvae. In addition to salinity and DO, pH is also thought to influence the presence of larvae [10].

The pH level of water quantifies its degree of acidity or basicity. The pH scale ranges from 0 to 14; if the pH value is less than 7, it indicates an acidic environment, while a value above 7 indicates a basic environment [11]. The results of Gopalakhrisnan's study [12] showed that the average percentage of larvae that developed into mosquitoes in water with pH 5 was 76.5%, while the percentage for pH 7 was 98%, and the percentage for pH 9 was 86.5%.

These findings demonstrate the possible influence of temperature, salinity, DO, and water pH on the proliferation of mosquito vectors. Therefore, if appropriate measures are to be taken in order to control DHF in Banjar Regency, South Kalimantan Province, there is clearly a need for research into the effects of temperature, salinity, DO, and pH levels of *A. aegypti* breeding water on larvae in endemic and non-endemic DHF areas there.

## 2. RESEARCH METHOD

This study used quantitative, observational, and analytic methods with a case-control study design. The case group was an aquatic breeding site located in an endemic area, while the control group was located in a non-endemic area. The sample used in this study consists of breeding sites located throughout Banjar Regency, South Kalimantan Province, Indonesia. Tanjung Rema Darat Village was selected as the site for the case group because it has the highest DHF incidence. The sample for the control group was taken from a breeding site located in Tanah Abang Village. Samples were taken by a purposive sampling technique from about 86 households, or 43 households for each group.

Visual observations of water breeding sites were conducted to obtain the data measuring larvae presence. Water samples were taken using a dipper, then stored in bottles. Samples were then stored in a cooler box. Data collection of larvae presence, temperature (°C), and pH markers took place directly in the field, while salinity and dissolved oxygen data were measured in environmental health laboratories. Well water was the type of *A. aegypti* breeding water which was studied. Bio-physicochemical markers of breeding water were categorized based on previous research. The larvae presence categories were defined as in Hidayah's research [13], that is, as "found" and "not found", or "present" and "absent".

The temperature and *Dissolved Oxygen* were categorized based on Sanchez's study [14]. The categories for temperature are "27-30°C", and "less than 27°C (<27°C) or >30°C". *Dissolved Oxygen* are categorized as "5.02-7 markamg/l" or "<5.02 mg/l, or >7.82 mg/l". The salinity categories, defined based on Anggraini's research [15], are "4-6 gr/l", and "<4 gr/l or >6 gr/l". Water pH levels are categorized as either "less than 6 (<6) or >7.8" or "6-7.8". This categorization is based on the results of Ridha's study [16], which found that the average pH value of a positive water reservoir containing larvae is pH 6-7.8. Data were analyzed by Chi-square test to determine the effects of the water markers on larvae existence, and then Logistic Regression tests were used to identify the dominant parameters in each group. The differences between each marker for endemic and non-endemic areas are analyzed using the Mann-Whitney test.

### 3. RESULTS AND DISCUSSION

#### 3.1. Characteristic of breeding sites

Characteristics of *A. aegypti* mosquito breeding sites include color, the presence or absence of a lid, and the location of the water container. These are presented for sites from endemic and non-endemic DHF areas in Table 1.

Table 1. Characteristics of *Aedes aegypti* mosquito breeding sites and the effect on larvae presence in endemic and non-endemic area

Characteristic	Endemic area		Non-endemic area		p-value
	n	%	n	%	
Color					
Dark	30	69.8	7	16.3	0.001
Bright	13	30.2	36	83.7	(<0.05)
Total	43	100	43	100	
Lid existence					
Not exist	27	62.8	5	11.6	0.000
Exist	16	37.2	38	88.4	(<0.05)
Total	43	100	43	100	
Position					
Outside	3	6.9	14	32.6	0.711
Inside	40	93.1	29	67.4	(>0.05)
Total	43	100	43	100	

Table 1 shows that the breeding sites for *A. aegypti* mosquitoes in endemic areas are mostly dark in color (69.8%), do not have a lid (62.8%), and are located indoors (93.1%). Breeding sites in non-endemic areas mostly share bright colors (83.7%), have a lid (88.4%), and are located indoors (67.4%). Statistically, the color characteristics and the presence of the lid have significant differences, while the positions of the breeding sites do not.

#### 3.2. Larvae presence in endemic and non-endemic area

Observations of larvae in each area show that larvae are typically present in endemic areas (68.3%), while larvae are usually absent in non-endemic area (85.4%) as shown in Figure 1.

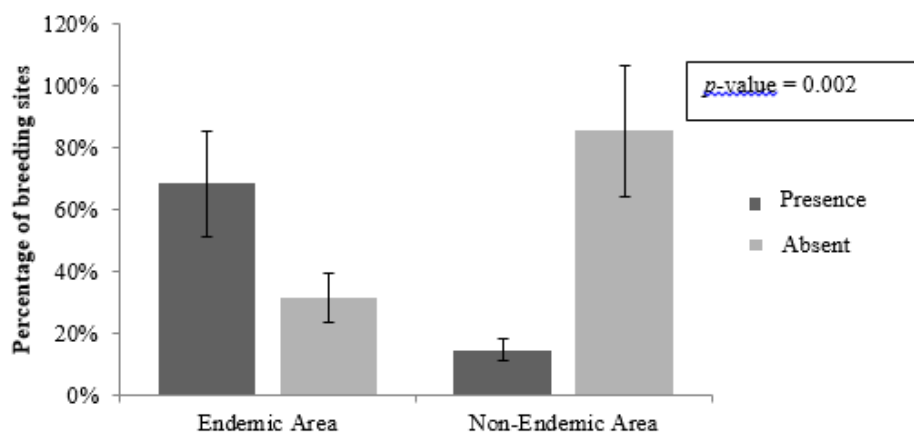


Figure 1. The comparison of larvae presence in endemic and non-endemic areas

#### 3.3. Temperature marker in endemic and non-endemic area

A comparison of statistical descriptors (mean±SD) of temperature data for endemic and non-endemic area is presented in Table 2. The results of a normality test showed that the temperature parameters were not normally distributed, and so they could not be analyzed by the parametric independent t-test. An appropriate alternative test is thus given by non-parametric Mann-Whitney test. The percentage comparison of temperature marker based on categories “27-30°C” and “<27°C or >30°C” showed that temperature in endemic areas mostly fell within the range 27-30°C (86%). The temperatures in non-endemic

areas were mostly in “<27°C or >30°C” ranges (72.1%). The temperatures between endemic and non-endemic areas differed significantly, with  $p$ -value=0.000 as shown in Figure 2.

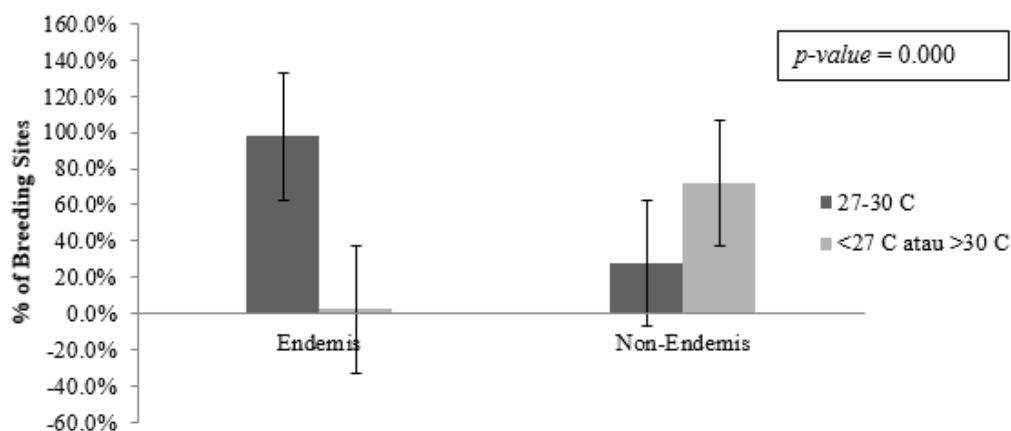


Figure 2. The comparison of temperature in endemic and non-endemic areas

Water temperature is very influential on larvae proliferation, since generally larvae prefer warm places. That is why *Aedes sp.* is more common in the tropics. The time of hatching of an egg depends on the water temperature to a certain extent; an egg developing in warmer temperatures will hatch faster to become an instar. Results showed that at a temperature of 20°C, eggs hatched within 3.5 days, whereas if the temperature was raised to a temperature of 35°C, the eggs hatched within 2 days.

#### 3.4. Salinity marker in endemic and non-endemic area

A comparison of statistical descriptors (mean±SD) salinity data for endemic and non-endemic areas is presented in Table 2. Salinity data for endemic and non-endemic areas are not normally distributed. Statistical tests yielded a  $p$ -value of 0.266. This shows that there is no significant difference in salinity between endemic and non-endemic areas. Salinity in endemic areas mostly falls in the category of “4-6 gr/l” (65.1%), as is also the case in endemic areas (83.7%).

Table 2. Statistic scores and the effect of temperature, salinity, Dissolved Oxygen (DO), and pH on larvae presence in endemic and non-endemic area

Statistic score	Endemic area	p-value	Non-endemic area	p-value
Temperature (C°) Mean ± SD	27.51 ± 0.798	0.002 (<0.05)	25.70 ± 1.124	0.093 (>0.05)
Salinity (gr/l) Mean ± SD	4.058 ± 0.927	0.000 (<0.05)	4.472 ± 1.365	0.075 (>0.05)
DO (mg/l) Mean ± SD	6.393 ± 1.143	0.019 (<0.05)	7.253 ± 1.099	0.080 (>0.05)
pH Mean ± SD	6.527 ± 0.909	0.001 (<0.05)	5.499 ± 0.659	0.004 (<0.05)

Salinity is a measure expressed by the amount of salts dissolved in a volume of water. The amount of salts dissolved in water determines the level of salinity [17]. Research by Rao [10] and Anggraini [15] found a significant relationship between salinity and larva density. In addition, the results also show that temperature, DO, and pH in endemic areas are very conducive for mosquito breeding. This causes more larvae to be found in endemic areas than in non-endemic areas. The survival of *Aedes aegypti* larvae is dependent on the abundance of food, including organic substances available in the breeding water. It is thus very dependent on the level of water markers such as temperature, pH, salinity, and Dissolved Oxygen.

#### 3.5. Dissolved oxygen marker in endemic and non-endemic area

The statistic score (mean±SD) for dissolved oxygen markers for endemic and non-endemic areas are presented in Table 2. Based on the mean value, it is known that DO markers in endemic areas are lower than in non-endemic areas. The data obtained were normally distributed, and statistical tests produced a  $p$ -value of 0.001. There are thus significant differences in DO between endemic and non-endemic areas. Dissolved Oxygen markers were categorized into 2 groups. They are “5.02–7.82 mg/l” and “<5.02 mg/l or >7.82 mg/l”. DO levels in endemic areas were mostly in the category “5.02–7.82 mg/l”

(76.7%). Meanwhile, DO levels in non-endemic areas were mostly in the category “<5.02 mg/l or >7.82 mg/l” (95.3%) as shown in Figure 3.

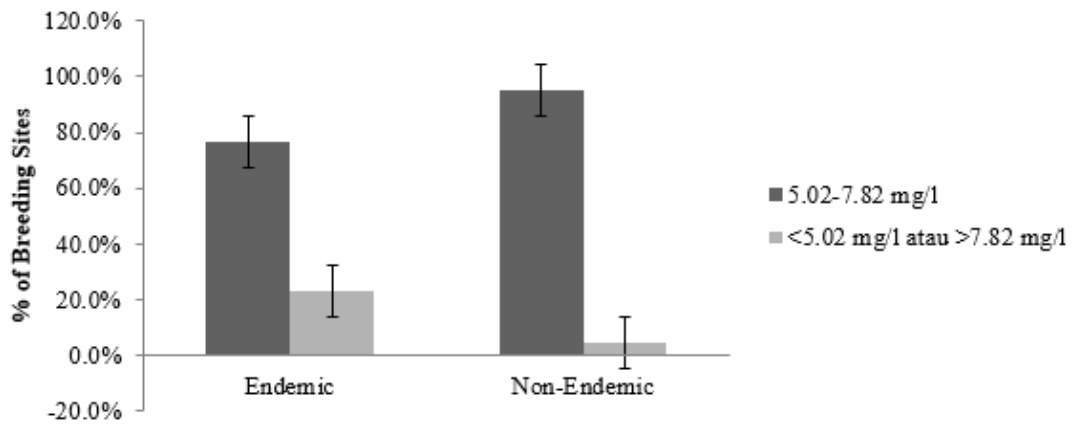


Figure 3. The comparison of DO marker in endemic and non-endemic area

Larvae are also influenced by dissolved oxygen (DO). DO levels which support larval breeding are those in which there is sufficient dissolved oxygen to meet the oxygen requirements of the larvae in the water reservoirs, and also serve as a marker that food sources for larvae are available. Dissolved oxygen levels in water depend on the amount of vegetation in the water. This is because the vegetation in the waters conducts photosynthesis. The photosynthesis process will affect the presence of dissolved oxygen (DO) in water, which in turn will affect the density of mosquito larvae at the breeding site [18].

Dissolved oxygen is needed by all living bodies for breathing, metabolic processes, or for the exchange of substances which then produce energy for growth and breeding. In addition, oxygen is also needed for the oxidation of organic and inorganic materials in the aerobic process [19]. Several studies that are in line with this research include Rao [10], Gopalakrishnan [12], Sanchez [14], and Olayemi [20]. These studies have proven that DO has a positive influence on the presence of larvae; the higher the DO levels of the breeding water, the more larvae are found there.

### 3.6. pH marker in endemic and non-endemic area

Statistical descriptors of pH marker data including mean  $\pm$  SD values are presented in Table 2. PH levels in endemic and non-endemic areas were not normally distributed, so they were categorized into “pH 6-7.8” and “<6 or > 7.8” groups. Levels of pH 6-7.8 are mostly found in endemic areas (63.4%) compared to non-endemic areas (12.2%). The highest occurrences of pH “<6 or > 7.8” sites were in non-endemic areas (87.8%) as opposed to endemic areas (36.6%) as shown in Figure 4.

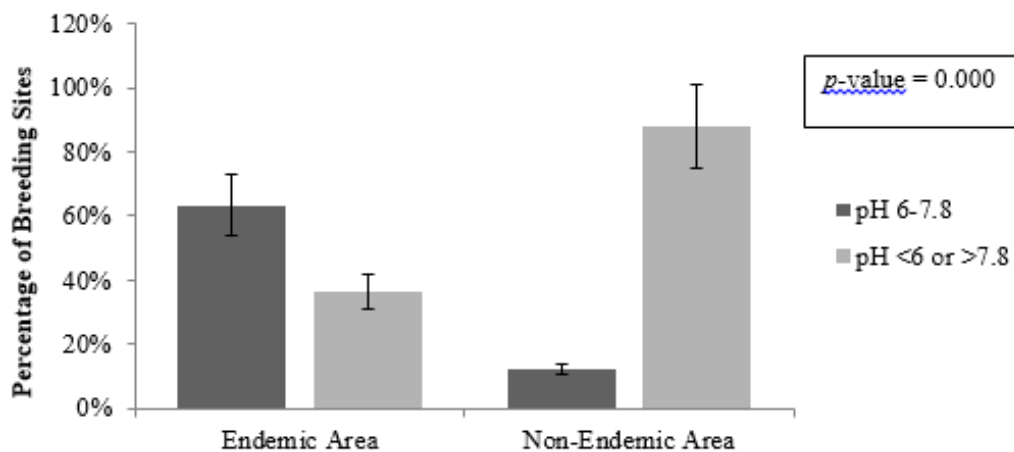


Figure 4. The comparison of pH level in endemic and non-endemic area



Statistically, temperature, salinity, DO, and pH markers affect the presence of larvae in endemic areas. The most influential marker is Dissolved Oxygen. Breeding water with DO in the category “5.02-7.82 mg/l” has a risk of larvae 3 times greater than water with DO in the category “<5.02 mg/l or 7.82 mg/l” (OR=3.00). The only marker that significantly affects larvae presence in non-endemic areas is pH; other markers do not significantly affect the presence of larvae as shown in Table 2.

Besides this, water with pH that is too acidic or too alkaline will easily result in dead larvae. The levels of pH that are too acidic are thought to inhibit plankton growth. Plankton is one of the primary food sources for mosquito larvae, and a reduction in this food source reduces the larvae's chances of sustaining life. These results are in agreement with the results of previous studies, including those of Umar and Donpedro in Rao [10], Ridha [16], Olayemi [20], Thangamathi [21], and Madzlan [22]. Both pH and temperature affect larvae density. The pH and temperature levels are positively associated with larvae density. This is because pH and temperature have an impact on mosquitoes associated with osmoregulation and oxygen transport.

#### 4. CONCLUSION

Bio-physicochemical markers of water samples from breeding sites show significant differences between endemic and non-endemic DHF areas, except in terms of salinity. The temperature, salinity, DO, and pH significantly affected the presence of larvae, with the DO marker showing the greatest affect. The marker that most affected the presence of larvae in non-endemic areas was pH.

#### ACKNOWLEDGEMENTS

This research was supported by Ministry of Research, Technology, and Higher Education in the scheme of beginner lecturer research grant 2018.

#### REFERENCES

- [1] Guzman A, Isturiz RE. Update on the global spread of dengue. *International of Journal Antimicrobial Agents*. Vol. 36: S40-S42. 2010.
- [2] World Health Organization. *Comprehensive guidelines for prevention and control of dengue and dengue haemorrhagic fever*. Revised and Expanded Edition. [www.apps.searo.who.int](http://www.apps.searo.who.int). 2011.
- [3] Ministry of Health of the Republic of Indonesia. Data and Information, Indonesian Health Profile (in Bahasa: Kementerian Kesehatan Republik Indonesia. *Data dan Informasi, Profil Kesehatan Indonesia*. Kemenkes RI. 2016.
- [4] Ministry of Health of the Republic of Indonesia. Data and Information, Indonesian Health Profile (in Bahasa: Kementerian Kesehatan Republik Indonesia. *Data dan Informasi, Profil Kesehatan Indonesia*. Kemenkes RI. 2017.
- [5] Banjar District Health Office. *Health Profile of Banjar Year 2016. Distric Health Office 2016 (in Bahasa: Dinas Kesehatan Kabupaten Banjar Profil Kesehatan Kabupaten Banjar Tahun 2016*. Dinkes Kab. Banjar. 2016.
- [6] Banjar District Health Office. *Health Profile of Banjar Year 2017. Distric Health Office 2017 (in Bahasa: Dinas Kesehatan Kabupaten Banjar Profil Kesehatan Kabupaten Banjar Tahun 2017*. Dinkes Kab). Banjar. 2017.
- [7] Damanik, Dewi D. 2012. *The Most Favored Breeding Site for Aedes aegypti Mosquitoes by Type of Water Source (in Bahasa: Tempat Perindukan yang Paling Disenangi Nyamuk Aedes aegypti Berdasarkan Jenis Sumber Air)*. Medan: Universitas Sumatera Utara.
- [8] Khoiriyah, Rahayu Astuti, Sayono. 2010. *Differences in Physical and Chemical Parameters of Breeding Water Based on the Aedes aegypti Larvae in Semarang City (in Bahasa: Perbedaan Parameter Fisika dan Kimia Air Perindukan Berdasarkan Keberadaan Jentik Aedes aegypti di Kota Semarang)*. Semarang: Universitas Muhammadiyah Semarang.
- [9] Afolabi O. J., Simon-Oke I. A., Osomo B. O. 2013. Distribution, Abundance and Diversity of Mosquitoes in Akure, Ondo State, Nigeria. *Journal of Parasitology and Vector Biology*. 2013; Vol. 5(10): 132-136.
- [10] Rao, B. Bhaskar, PS Harikumar, T. Jayakrishnan and B. George. Characteristics of *Aedes (Stegomyia) Albopictus* Skuse (Diptera: Culicidae) Breeding Sites. *Southeast Asian J Trop Med Public Health*. 2011; Vol. 42(5): 1077-1082.
- [11] Kasetyaningsih, T., Sundari, S. 2007. Difference Between House Index Involving Well Inspection in the Dengue Vector Survey in Pepe Bantul Hamlet (in Bahasa: Perbedaan Antara House Index yang Melibatkan Pemeriksaan Sumur pada Survei Vektor Dengue di Dusun Pepe Bantul”. *Jurnal Kedokteran YARSI*. Yogyakarta. 2006; 14 (1): 034-037.
- [12] Gopalakrishnan, Das M., Baruah I., Veer V., Dutta P. 2013. Physicochemical Characteristics of Habitats in Relation to the Density of Container-Breeding Mosquitoes in Asom, India. *J Vector Borne Dis*. 2013; Vol. 50 (3): 215-9.

- [13] Hidayah, N., Iskandar, Abidin, Z. Prevention of Dengue Hemorrhagic Fever (DHF) Associated with the *Aedes aegypti* Larvae Presence based on the Type of Water Source. *Journal of Tropical Life Science*, [S.l.], v. 7, n. 2, p. 115-120, June 2017. ISSN 2527-4376.
- [14] Sanchez, D. C. G., Pinilla, G.A., Quintero, J. Ecological characterization of *Aedes aegypti* larval habitats (Diptera: Culicidae) in artificial water containers in Girardot, Colombia. *Journal of Vector Ecology*. July 2017. Vol. 42, No. 2: 289-297.
- [15] Angraini, T. S., Cahyati, W. H. Perkembangan *Aedes aegypti* pada berbagai pH air dan salinitas air. *Higeia Journal of Public Health Research and Development*. Juli 2017. Vol 1, No. 3: 1-10.
- [16] Ridha, M. R., Rahayu, N., Rosvita, N. A., Setyaningtyas, D. E. The relation of environmental condition and container to the existence of the *Aedes aegypti* larvae in dengue haemorrhagic fever endemic areas in Banjarbaru. *Epidemiology and Zoonosis Journal*. Mei 2013. Vol. 4, No. 3: 133-137.
- [17] Effendi, H. 2003. "Review Water Quality for Management of Resources and Aquatic Environment". Fifth print (in Bahasa: Telaah Kualitas Air bagi Pengelolaan Sumber Daya dan. Lingkungan Perairan. Cetakan Kelima) Yogyakarta: Kanisius.
- [18] Thangamathi, P., Ananth, S., Kala, N., Maheswari, R., Gnanasoundrai, A., Nagamani, N. Seasonal variations and physicochemical characteristics of the habitats in relation to the density of dengue vector *Aedes aegypti* in Thanjavur, Tamil Nadu, India. *International Journal of Science and Nature*. 2014. Vol. 5 (2): 271-276.
- [19] Madzlan F, Nazri CD, Chua ST, Nurmahirah Z. 2016. Breeding characteristic of *Aedes* mosquitoes in dengue risk area. *Procedia-Social and Behavioral Sciences*. 234 (2016): 164-172.
- [20] Olayemi IK, Omalu ICJ, Famotele OL, Shegna SP, Idris B. Distribution of mosquito larvae in relation to physico-chemical characteristics of breeding habitats in Minna, North Central Nigeria. *RIF*. 2010. Vol 1(1): 49-53.
- [21] Yusuf M., Gentur Handoyo, Muslim, Sri Yulina Wulandari, dan Heriyoso Setiyono."Characteristics of Flow Patterns in Relation to Water Quality Conditions and Phytoplankton Abundance in the Waters of Karimunjawa Marine National Park Area (in Bahasa: Karakteristik Pola Arus Dalam Kaitannya dengan Kondisi Kualitas Perairan dan Kelimpahan Fitoplankton di Perairan Kawasan Taman Nasional Laut Karimunjawa". *Buletin Oseanografi Marina*. Oktober 2012. vol. 1: 63 – 74.
- [22] Salmin. Dissolved Oxygen (DO) and Biological Oxygen Needs (BOD) As One Indicator To Determine Water Quality (in Bahasa: Oksigen Terlarut (DO) Dan Kebutuhan Oksigen Biologi (BOD) Sebagai Salah Satu Indikator Untuk Menentukan Kualitas Perairan". *Oseana*. Vol. XXX, Nomor 3, 2005: 21-26. ISSN 0216-1877.



# YAYASAN INDAH BANJARMASIN SEKOLAH TINGGI ILMU KESEHATAN SARI MULIA

SK MENDIKNAS NO. 44/D/O/2009 Terakreditasi BAN-PT  
Jl. Pramuka No. 2 Banjarmasin Telp. (0511) 3268105, Fax. (0511) 3270134  
e-mail : [info@stikessarimulia.ac.id](mailto:info@stikessarimulia.ac.id), Website : [www.stikessarimulia.ac.id](http://www.stikessarimulia.ac.id)

## SURAT TUGAS

No. 001.2/ST-Pnltn/STIKES-SM/IV/2018

Yang bertanda tangan di bawah ini:

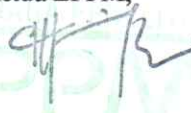
Nama : Dede Mardiyah  
NIK : 19.44.2012.069  
Jabatan : Ketua LLPM

Dengan ini menugaskan yang namanya terlampir untuk melaksanakan Penelitian sebagai wujud Tridharma Perguruan Tinggi pada semester Genap Tahun Ajaran 2017/2018 dengan judul ***“Bio-physicochemical markers of the Aedes aegypti breeding water in endemic and non-endemic area”***. Penelitian ini akan dilaksanakan pada Bulan April sampai Juni 2018.

Demikian surat tugas ini dibuat untuk dipergunakan sebagaimana mestinya.

Banjarmasin, 14 April 2018

Ketua LPPM,

  
Dede Mahdiyah, M.Si  
NIK. 19.44.2012.069

**MENGESAHKAN**  
Salinan/copy sesuai dengan aslinya  
Banjarmasin, 15 Jun 2018  
Universitas Sari Mulia  
Lembaga Penelitian dan Pengabdian  
kepada Masyarakat (LPPM)  
Ketua  
  
Dini Rahmayani, S.Kep., Ns., MPH  
NIK. 1166122004007



Lampiran:

No	Nama	NIK	Prodi
1.	Nurul Hidayah	19.44.2016.133	PSIK
2.	Dwi Rahmawati	19.44.2012.060	DIV Bidan Pendidik

Banjarmasin, 14 April 2018

Ketua LPPM,



Dede Mahdiyah, M.Si  
NIK. 19.44.2012.069